

Tuesday 3rd January 2023

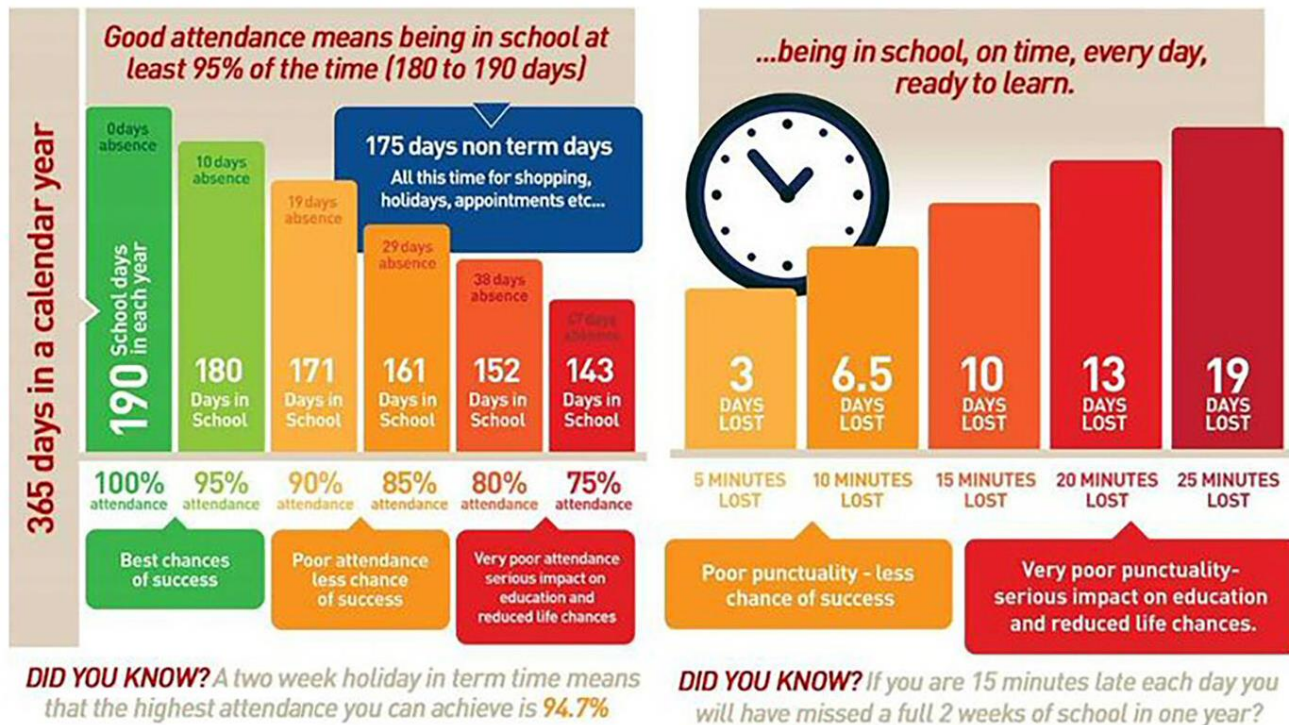
Spring Term 2023 – Welcome Back.

Dear parents/carers

2023: Happy New Year to you all. I hope that you have all had an enjoyable Christmas break with your families and friends. Hopefully your children are well rested ahead of a busy Spring Term at Perry Hall.

Attendance and Punctuality

Good attendance and punctuality is crucial in supporting the progress that your child makes within school. Please refer to the diagram below.



We would like to politely remind you that if your child is absent from school, it is your responsibility to inform school of the absence together with the reason for the absence. This needs to take place on the first day that your child is absent from school and then on each subsequent day of absence. The office staff are required to ask you for medical evidence for your child's absence (i.e. GP appointment card/medication/medication packaging/prescriptions/hospital and appointment letters, etc).

A further polite reminder, schools do not authorise term-time holidays. If you do require a leave of absence due to exceptional circumstances, please refer to and complete the relevant documents available from the main office. If you choose to take your child out of school on holiday during term time, this will be classed as an unauthorised absence and the local authority will impose a penalty notice of £60 per child and per parent.



School Uniform

As a school, we are proud of our school uniform and we very much appreciate your adherence to our uniform expectations. Uniform plays a valuable role in contributing to our school ethos and helps to set an appropriate tone. Please ensure that you advise year group staff as to why your child isn't wearing any aspect of the school uniform at any time so that they do not have to approach you unnecessarily. We thank you in advance for supporting us in upholding our standards.

To confirm, winter uniform is as follows:

Girls:

- white polo shirt/blouse (optional school tie) and grey skirt / pinafore / trousers with a green cardigan (school logo available)
- plain black, low heeled shoes.

Boys:

- grey trousers and white shirt with a school tie/polo shirt with a green jumper
- plain black school shoes (*no trainers/pumps*).

A few reminders regarding uniform:

- Plain black shoes must be worn; trainers are not acceptable.
- We do not allow the wearing of jewellery other than one pair of stud earrings (which children must bring in plasters to cover these with during PE and after school sports sessions).
- Nail varnish and make up are also not allowed. Natural coloured hair only allowed.
- Please ensure that all uniform is clearly labelled.

On your child's PE day they should come into school wearing their full PE kit (plain black jogging bottoms, house colour t shirt, plain black jumper/zip up if required and trainers).

Please ensure that all uniform is clearly labelled.

Our uniform supplier, Kids Corner (11 Showell Circus, Wolverhampton WV10 9BA), has now reopened, Mon-Fri, 9am-4.30pm. Please call 01902 863222 if you require any further information.

Spring Term After School Extra Curricular Enrichment Clubs

Thank you to everyone who expressed an interest in booking their child onto an after-school enrichment club for the Spring Term. Messages will be sent out to confirm whether your child has been allocated a place throughout this week. Clubs will start from next week, week beginning 9th January. Payment to be made through ParentPay please.

Upcoming Dates

- Week beginning 9th January- Extracurricular Spring Term clubs start (running until 23.03.23)
- 10.01.23- 2.30pm- RWI Phonics Parent Workshop (for Reception and Year 1).

Perry Hall Primary School

Colman Avenue
Wednesfield
Wolverhampton
WV11 3RT

Tel: **01902 921159**
Fax: **01902 558543**



Email: perryhallprimaryschool@wolverhampton.gov.uk

Web: www.perryhall.co.uk

Head of School

Mrs C Gibbins

Executive Headteacher

Miss R Kohli

Chief Executive Officer

Mrs A Cheema OBE

- 16.01.23-20.01.23- Year 6 residential to Laches Wood
- 24.01.23- 2pm- Year 4 Multiplication Tables Check Parent Workshop
- 24.01.23- Rockstars Day (to raise awareness of Times Table Rock Stars)
- 13.02.23-15.02.23- Year 2 residential to Kingswood
- 17.02.23- School breaks up for half term
- 20.02.23 – 24.02.23- Half Term Holiday
- 27.02.23- Start of Spring Term 2.

I wish you all a Happy New Year and hope that 2023 is positive.

Yours sincerely

Mrs C Gibbins
Head of School.

